

# Five Year Plans for BIL Funding

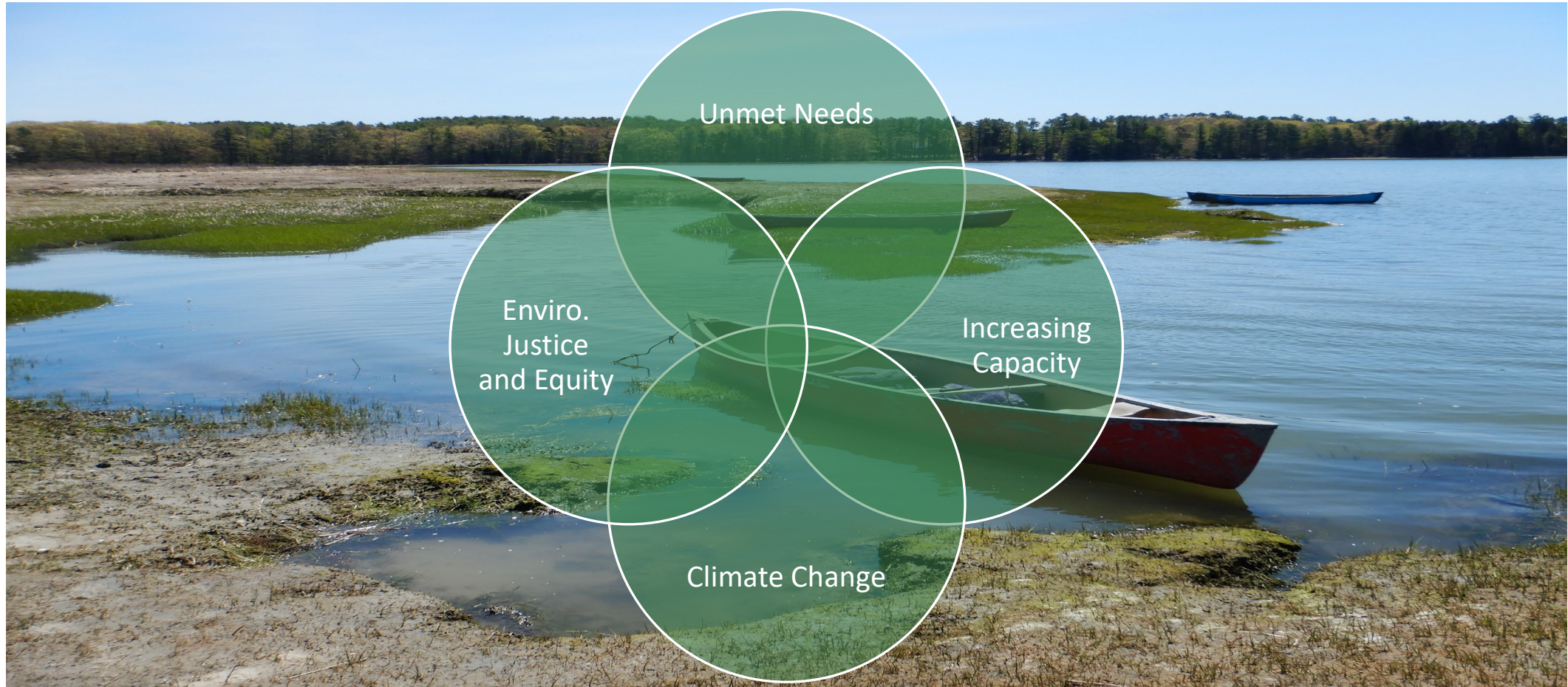
CURTIS C. BOHLEN, DIRECTOR  
CASCO BAY ESTUARY PARTNERSHIP



Jerry Monkman, Ecophotography

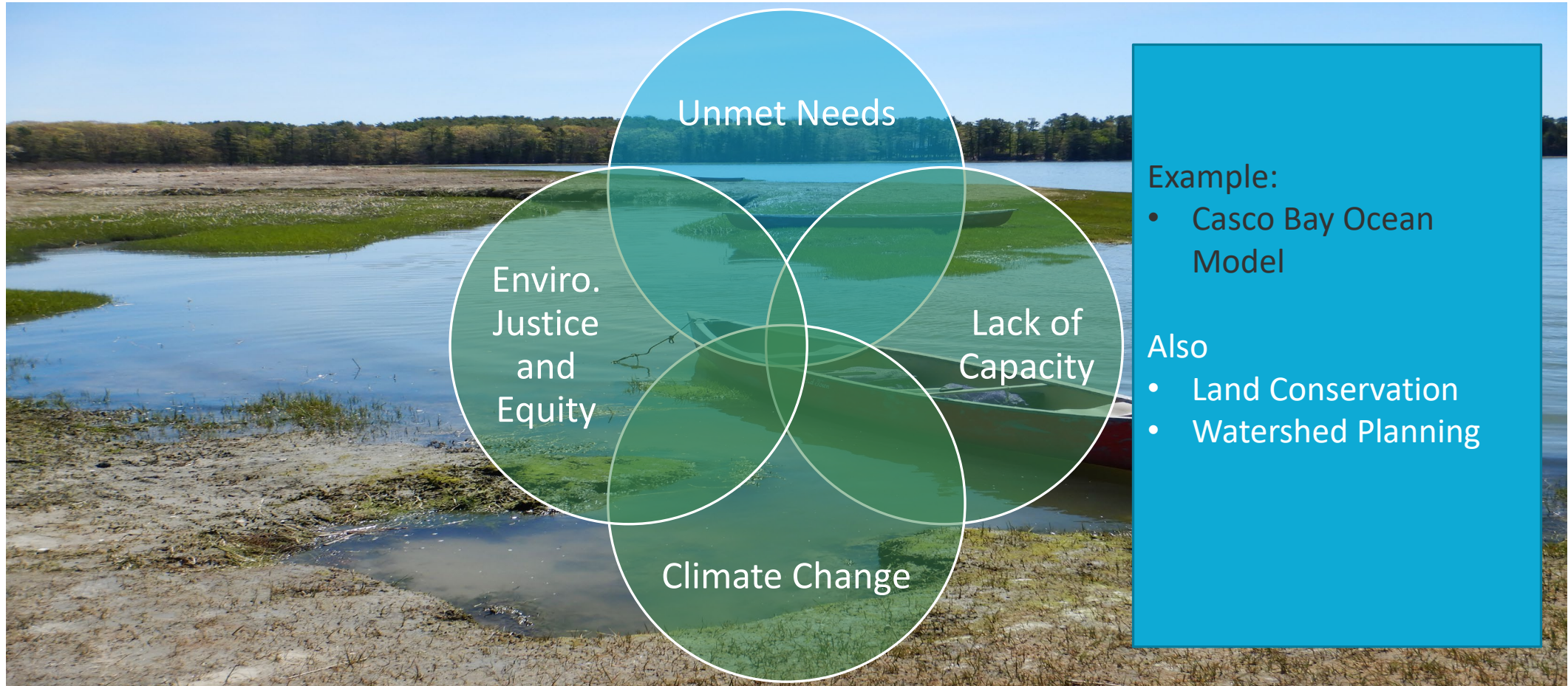


# Strategic Priorities for BIL Funds





# Strategic Priorities for BIL Funds



# The Casco Bay Regional Ocean Model

High resolution ocean model

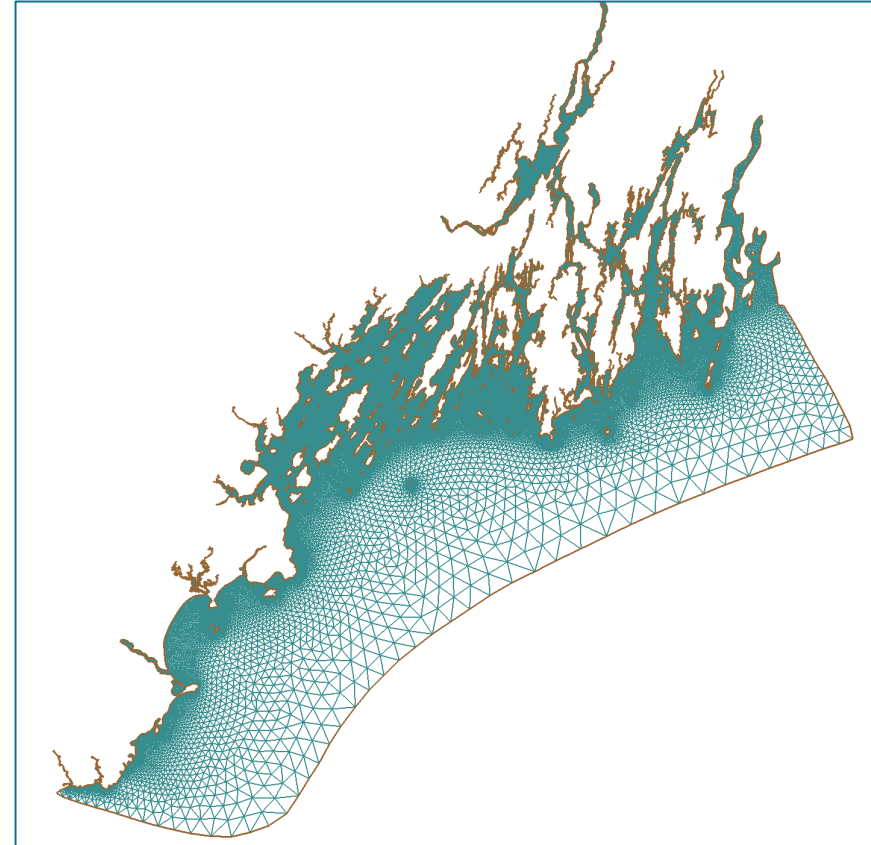
Saco Bay to Boothbay

Daily three-day forecast

- Ocean height
- Wave height and period
- Currents (3-D, Surface and at depth)
- Salinity and temperature (Surface and at depth)

Predictions about every 10 meters inshore

Original motivation was for water quality



The "Model Grid" for the Casco Bay Model



# What Other Problems Can Models Help Solve?

Three community workshops

Focused on Portland Harbor

Flooding

Water Quality

Port Activities

Follow-up interviews

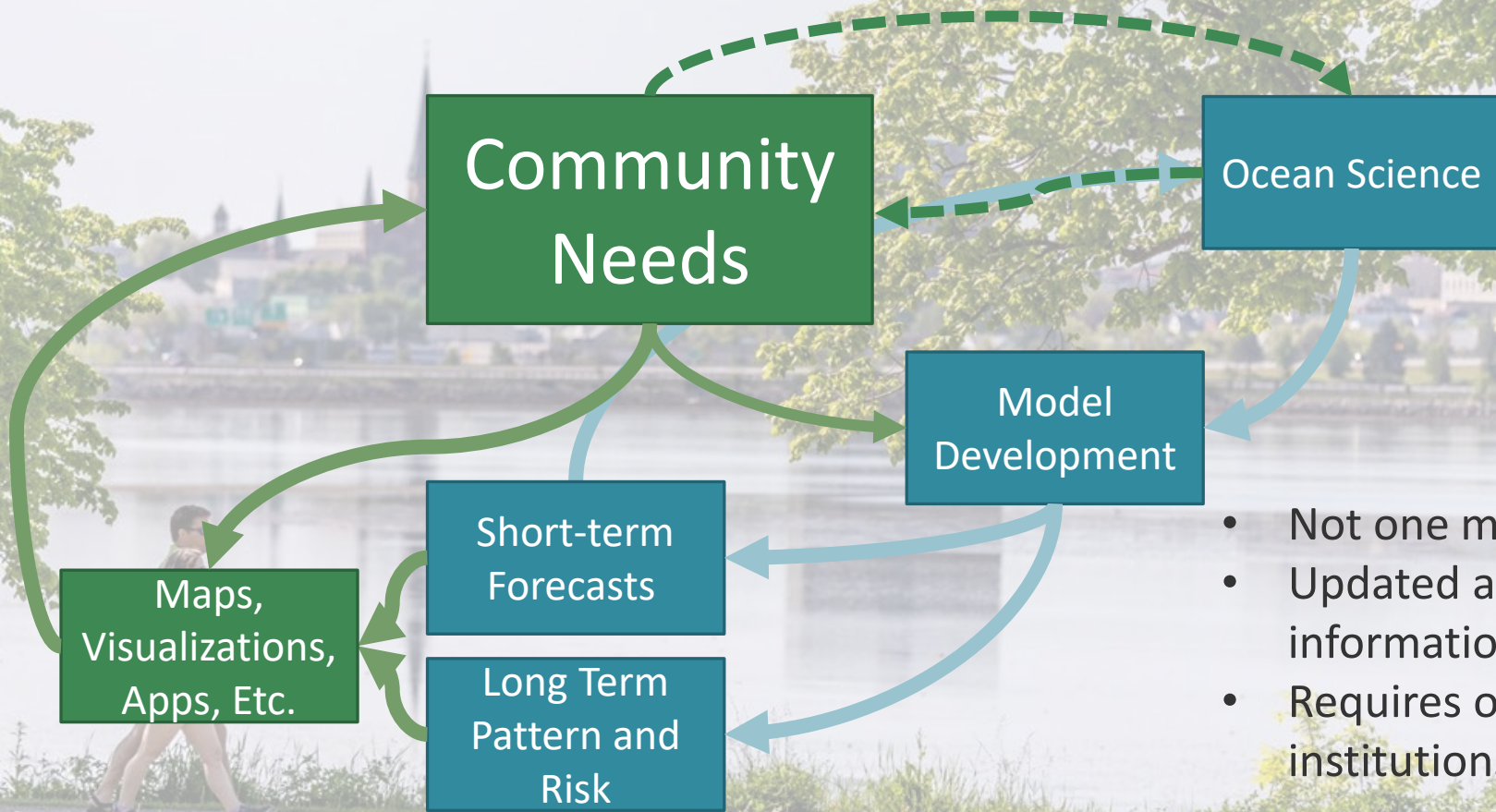


Jane Ceraso

Flooding at high tide during December 23, 2022 Nor'easter



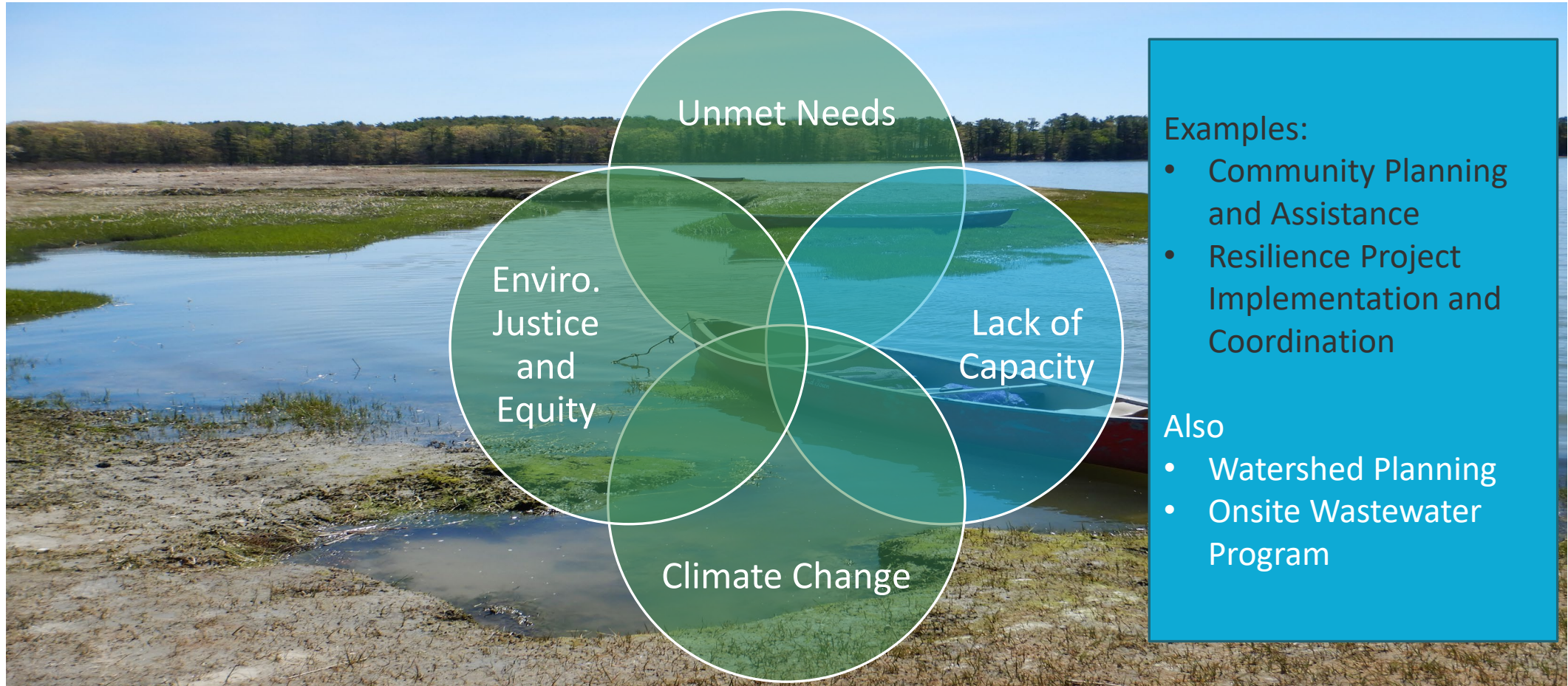
# Community Centered Ocean Models



- Not one model or tool, but many
- Updated and extended with new information as needs change
- Requires ongoing dialog, new institutions



# Strategic Priorities for BIL Funds



- Examples:
- Community Planning and Assistance
  - Resilience Project Implementation and Coordination
- Also
- Watershed Planning
  - Onsite Wastewater Program

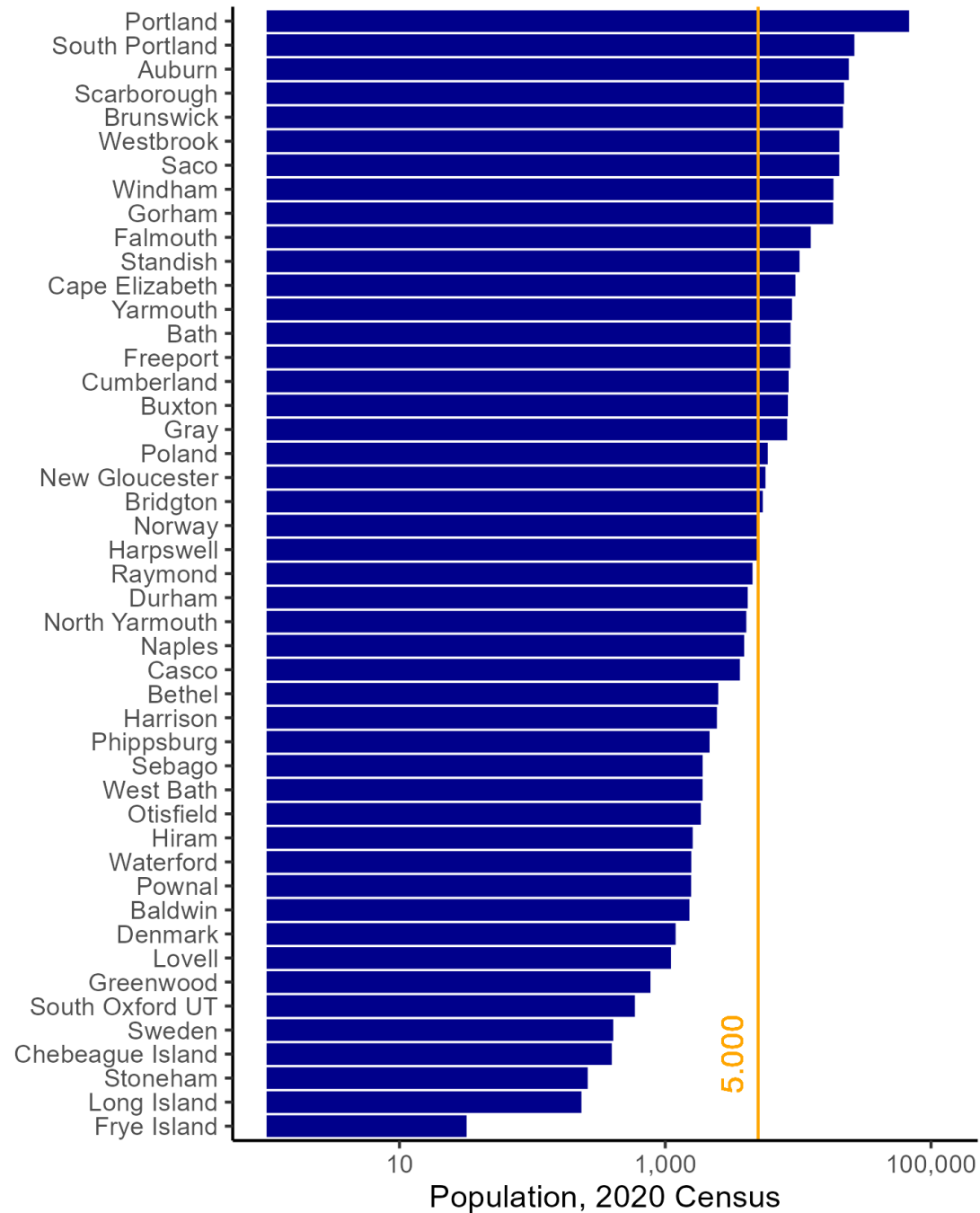
# Municipal Assistance

Half our towns have a population of under 5,000

Most have few staff to tackle:

- Climate, water quality or open space planning
- Implement resilience projects

Funds are available, but towns can't access them



Note the log scale!



# Restoration and Resilience Coordination

---

Federal funding opportunities are offering more money, but they often don't fund small projects

- Many Maine organizations have no ability to apply for or manage multi million-dollar grants
- Need to assemble collections of related activities to be more attractive to funders

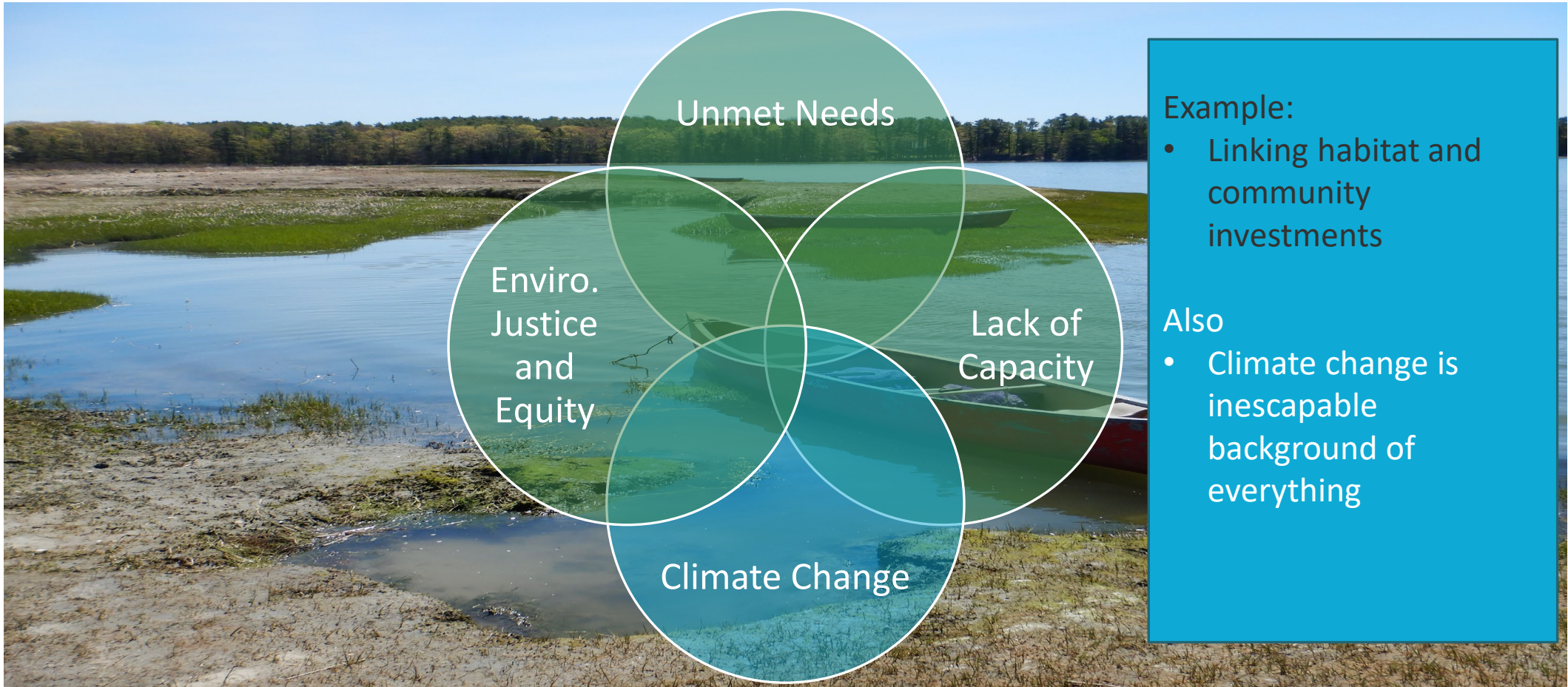
Increasing need for coordination and capacity to access available funds



Kate Furbish Preserve, Brunswick, Maine, part of the Maquoit and Middle Bay Conservation Focus Area



# Strategic Priorities for BIL Funds



## Example:

- Linking habitat and community investments

## Also

- Climate change is inescapable background of everything



# Tidal Marsh Restoration, 2013

Partners:  
Maine DOT,  
Baxter State Park Authority  
Landowners

Long Reach Lane, Harpswell



Infrastructure Upgrade



Map courtesy of Shri Verrill

Habitat Restoration  
Habitat Resilience



# What were we missing?

---

Partners:  
CCSWCD  
Town of Harpswell  
Landowners



Long Reach Lane



Wallace Shore Road



# The Sweet Spot: Combined Priorities

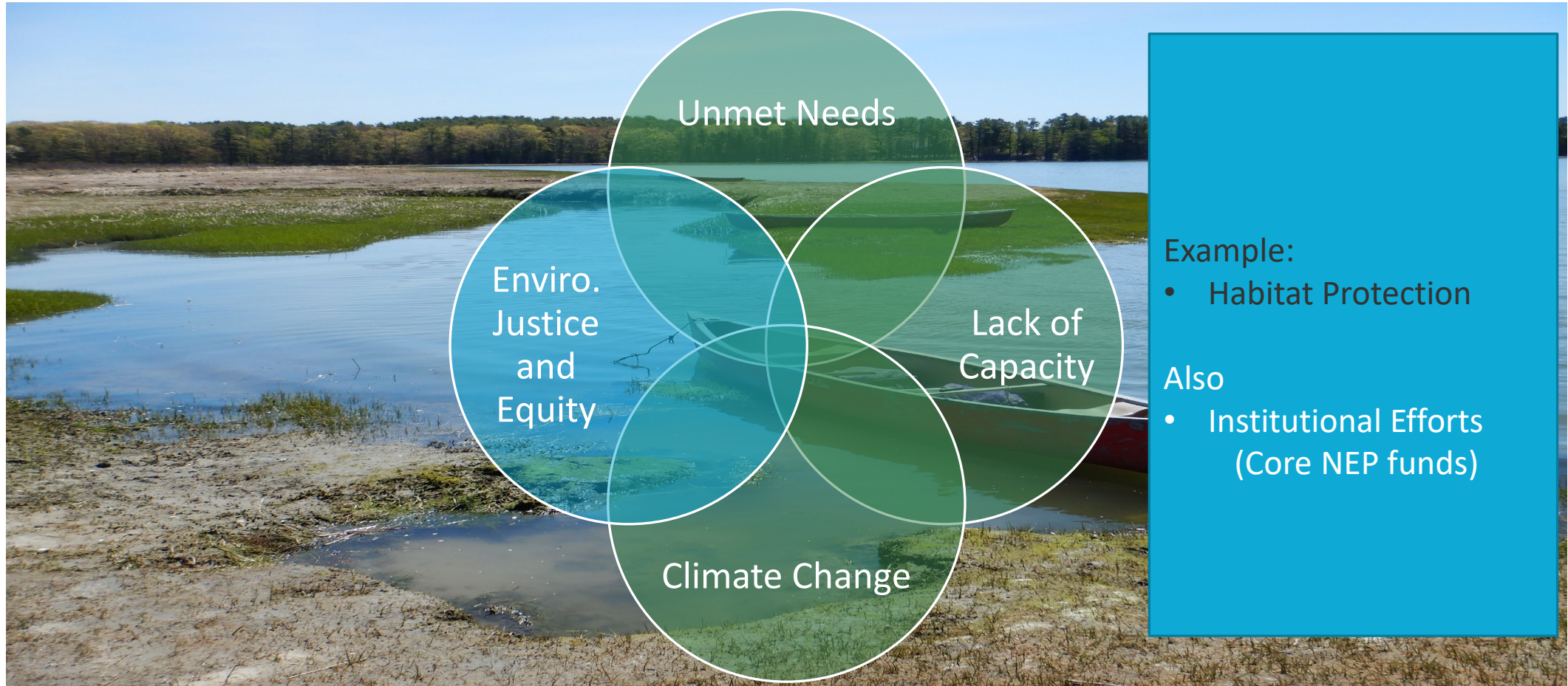


BURGESS BROOK DAM REMOVAL,  
SEPTEMBER 2022





# Strategic Priorities for BIL Funds



Example:

- Habitat Protection

Also

- Institutional Efforts (Core NEP funds)



# Grants for “Habitat Protection”

## CBEP Habitat Protection Fund

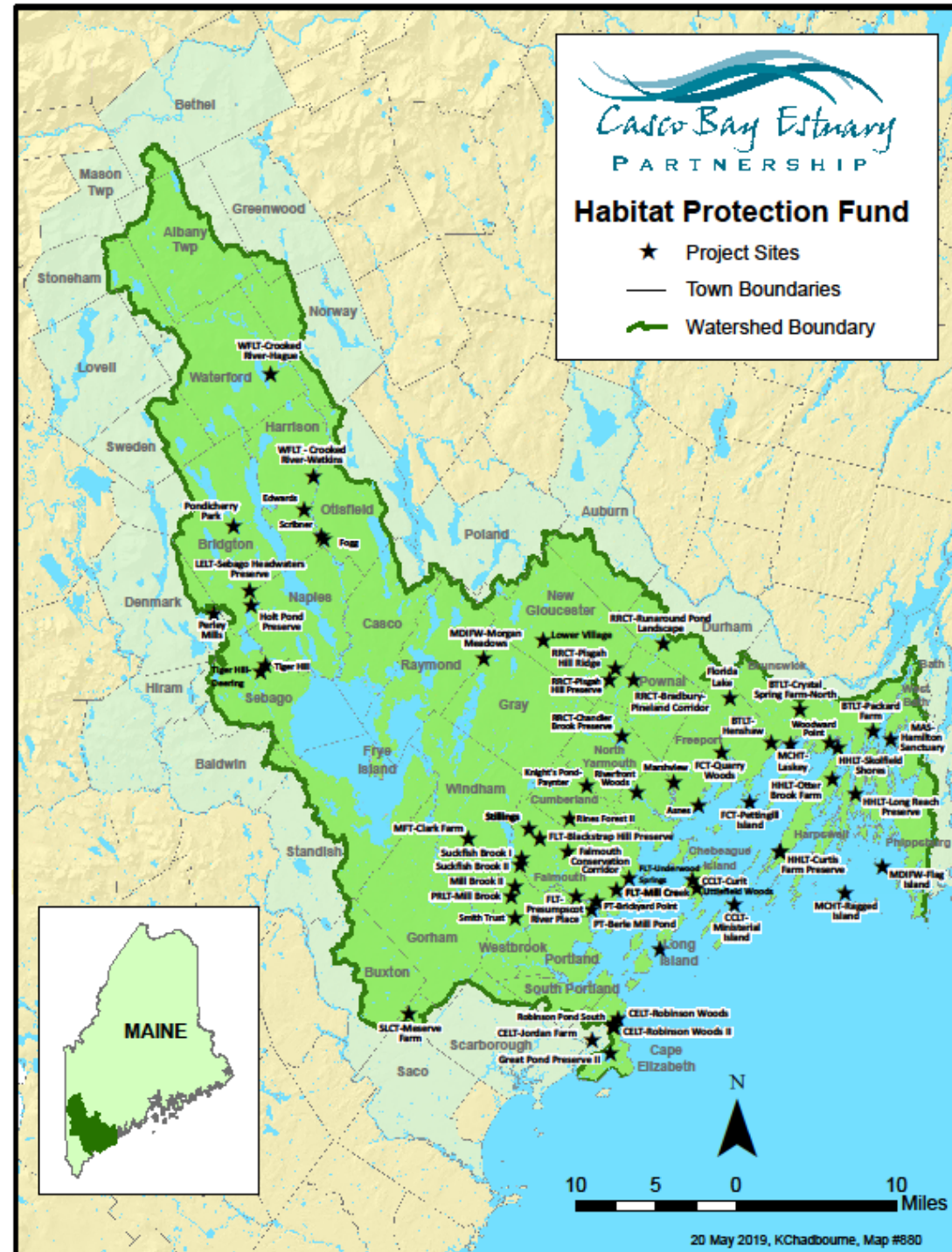
- 20 years and counting
  - 56 Projects
  - 27 Partners
  - 27 Municipalities
- 10,429 acres

Casco Bay Watershed 20% by 2030?

Significant increase in funding thanks to BIL funds

Equity analysis raises questions of purpose of these grants

Focus on communities with limited access to open space



# Equity and Access to Conserved Land

Inland towns are less wealthy and more economically dependent on tourism

Recreational access to conserved lands is concentrated along the coast.

But access to private forestland is higher inland (but going away as culture changes)

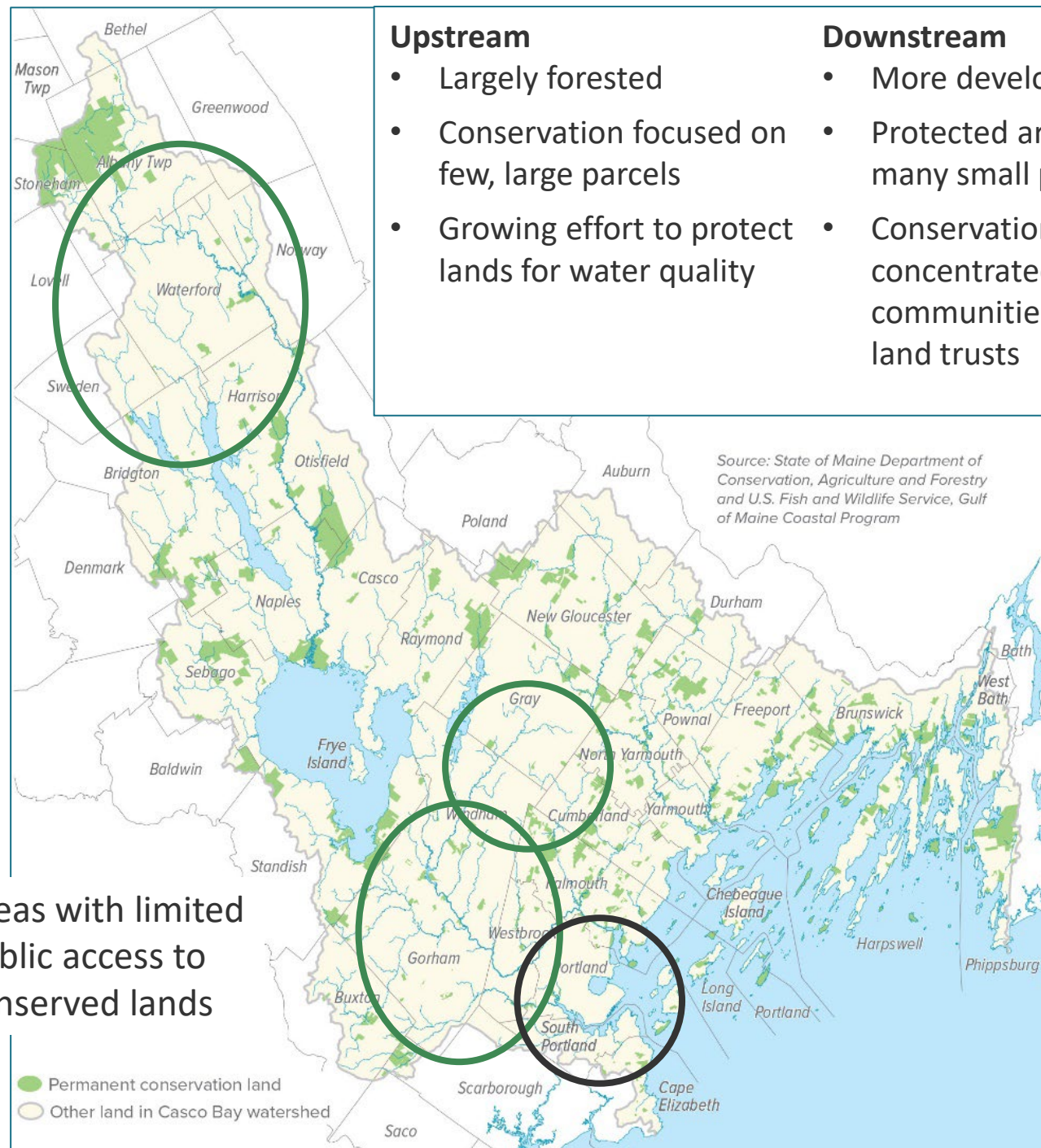
Areas with limited public access to conserved lands

## Upstream

- Largely forested
- Conservation focused on few, large parcels
- Growing effort to protect lands for water quality

## Downstream

- More developed
- Protected areas include many small preserves
- Conservation is concentrated in coastal communities with active land trusts





# Thank You

Curtis Bohlen  
Director, Casco Bay Estuary Partnership  
[curtis.bohlen@maine.edu](mailto:curtis.bohlen@maine.edu)  
<https://www.cascobayestuary.org>