

# Building resilience at the neighborhood level

## Update on PREP-RI and CFP

*Jen West*  
*CTP Coordinator*  
*Narragansett Bay NERR*







Common Fence Point (CFP)  
Portsmouth, RI



# CFP Preparedness Committee (CFPPC)





**CFP**

**CRAFTING A READINESS SYSTEM  
PREPARE FOR EXTREME WEATHER  
WED JULY 29 @ 6PM REGISTER @  
[www.commonfencepoint.org](http://www.commonfencepoint.org)**

**BEST  
SUMMER  
EVER®**



**CAMP CFP  
SIGN UP FOR  
CAMP TODAY!**





## **SHOULD I STAY OR SHOULD I GO? PREPARING FOR EXTREME WEATHER**

**Join the CFP PREPAREDNESS COMMITTEE:**



**For an Interactive, Online Forum with  
Ray Perry  
Portsmouth's Emergency Manager  
Wednesday, July 8, 6-7 PM**

**To Learn About:**

- **EVACUATION**
- **STORM PLANNING**
- **TOWN-WIDE PLANS**

**REGISTER AT**

**CommonFencePoint.ORG**

## **CRAFTING A PREPAREDNESS SYSTEM**

**PREPARING FOR EXTREME WEATHER**

**WEDNESDAY, JULY 29, 6-7PM**

**JOIN THE CFP PREPAREDNESS COMMITTEE:**

**An interactive, online forum to learn  
what a personal preparedness system  
is and how to create and maintain one  
for you and your family**

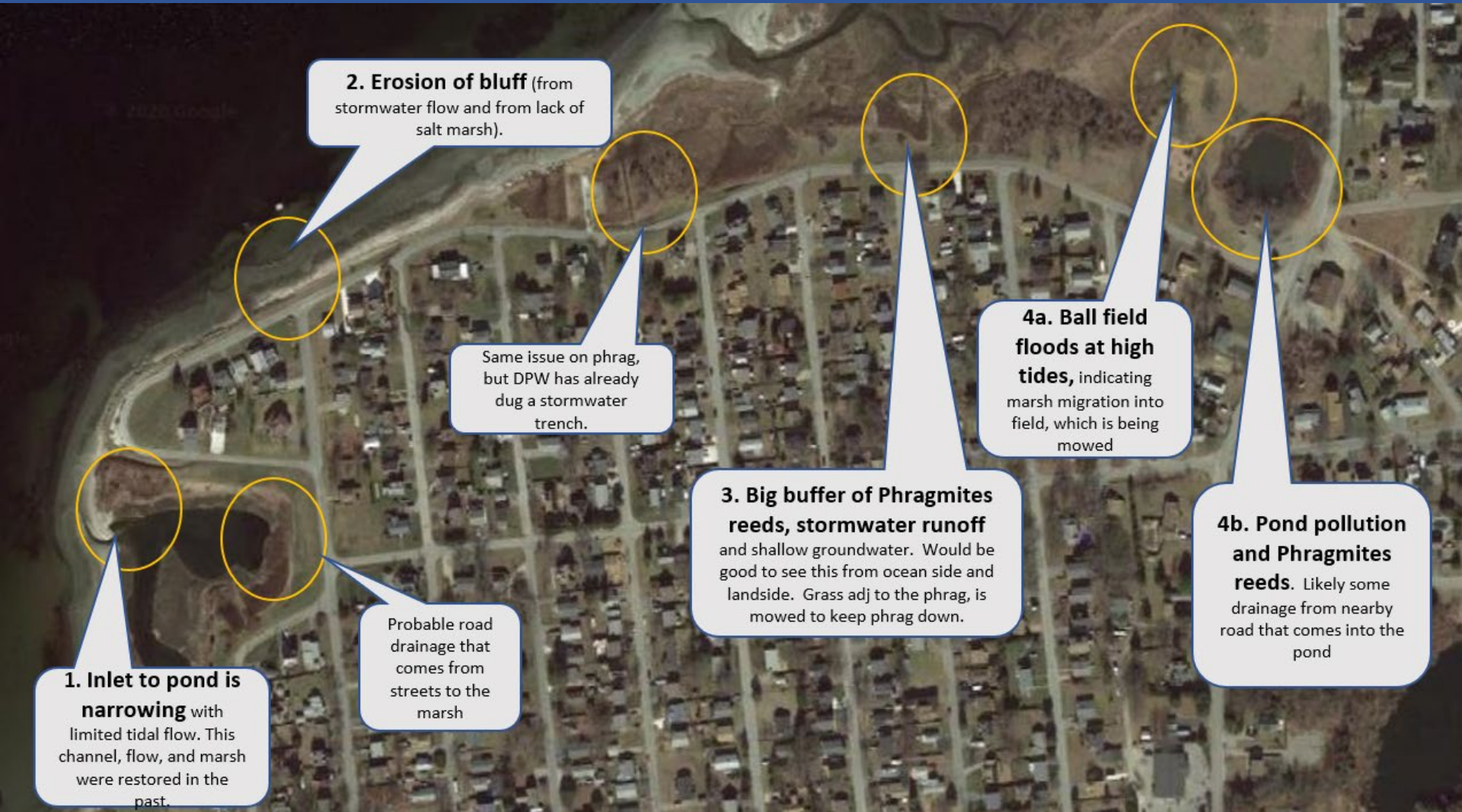


**LED BY RAY PERRY,  
PORTSMOUTH'S EMERGENCY  
MANAGER ACCOMPANIED BY  
MASTER OF SCIENCE STUDENTS  
FROM MASS MARITIME ACADEMY**

**OPEN TO ALL PORTSMOUTH RESIDENTS & EMPLOYEES**

**REGISTER HERE FOR THE FORUM  
CommonFencePoint.org**

# CFP Shoreline Field Trip











# MEETING THE CHALLENGE OF A CHANGING COAST: TAKING ACTION IN CFP

**JOIN THE CFP PREPAREDNESS COMMITTEE:  
WEDNESDAY, OCTOBER 7  
FROM 6:30-7:30 PM**

- Learn from your neighbors about particular areas of risk
- Get RI experts' take on what can be done to help protect CFP's shoreline
- Ask questions discuss the future of CFP's coastline

**JOIN US FOR A VIRTUAL FIELD TRIP TO VISIT**

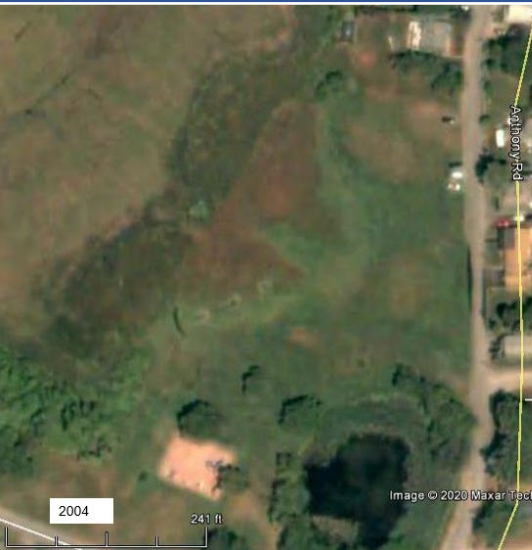
- Western river inlet & detention pond
- Shoreline along CFP Boulevard
- Sites with Phragmites view obstruction
- Community recreation area and pond

**REGISTER AT: [surveymonkey.com/r/CFPcoast](https://surveymonkey.com/r/CFPcoast)**

**For more info: [cfp-prep@commonfencepoint.org](mailto:cfp-prep@commonfencepoint.org)**



# Coastal and Estuary Habitat Restoration Program and Trust Fund Proposal



New stormwater filtration area installed by town





**To be continued...**