

Building resilience at the neighborhood level

*Jen West
CTP Coordinator
Narragansett Bay NERR*





Common Fence Point (CFP)
Portsmouth, RI

Common Fence Point Neighbors- Do you know your risk? Do you have a plan? Are you ready to take action?

Please join us at Common Fence Point
Resilience Building Workshops
Saturday, April 6, 2019 & Saturday, April 27, 2019
9 am-12 pm

VFW, 822 Anthony Rd, Portsmouth, RI

Coffee and a light breakfast will be provided!

Please RSVP

Questions? Please contact Pam Rubinoff at rubinoff@uri.edu or 401-874-6135 or Jen West at jennifer.west@dem.ri.gov or 401-222-4700, x 7413.

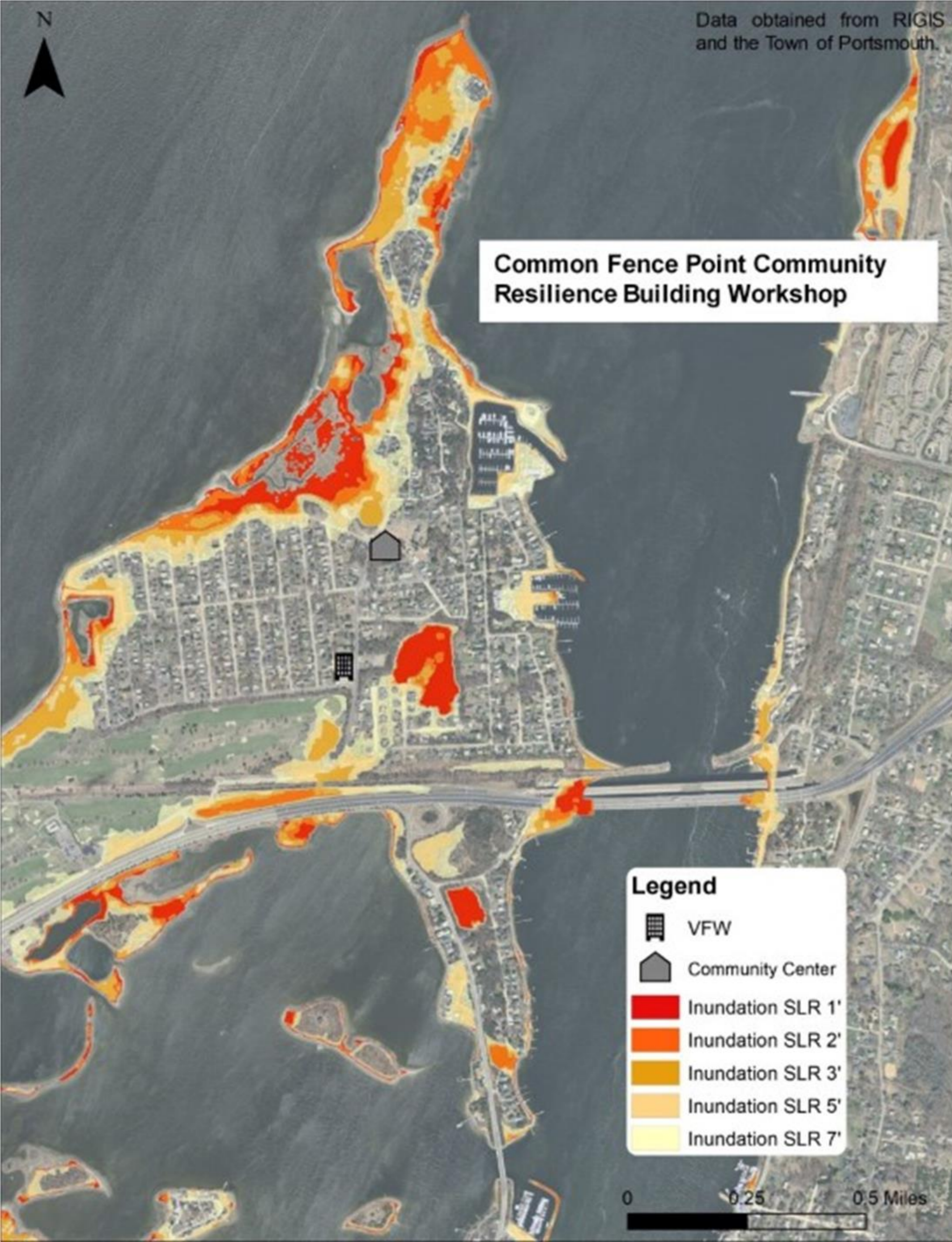
Community Resilience Building Workshop April, 2019



Data obtained from RIGIS and the Town of Portsmouth.



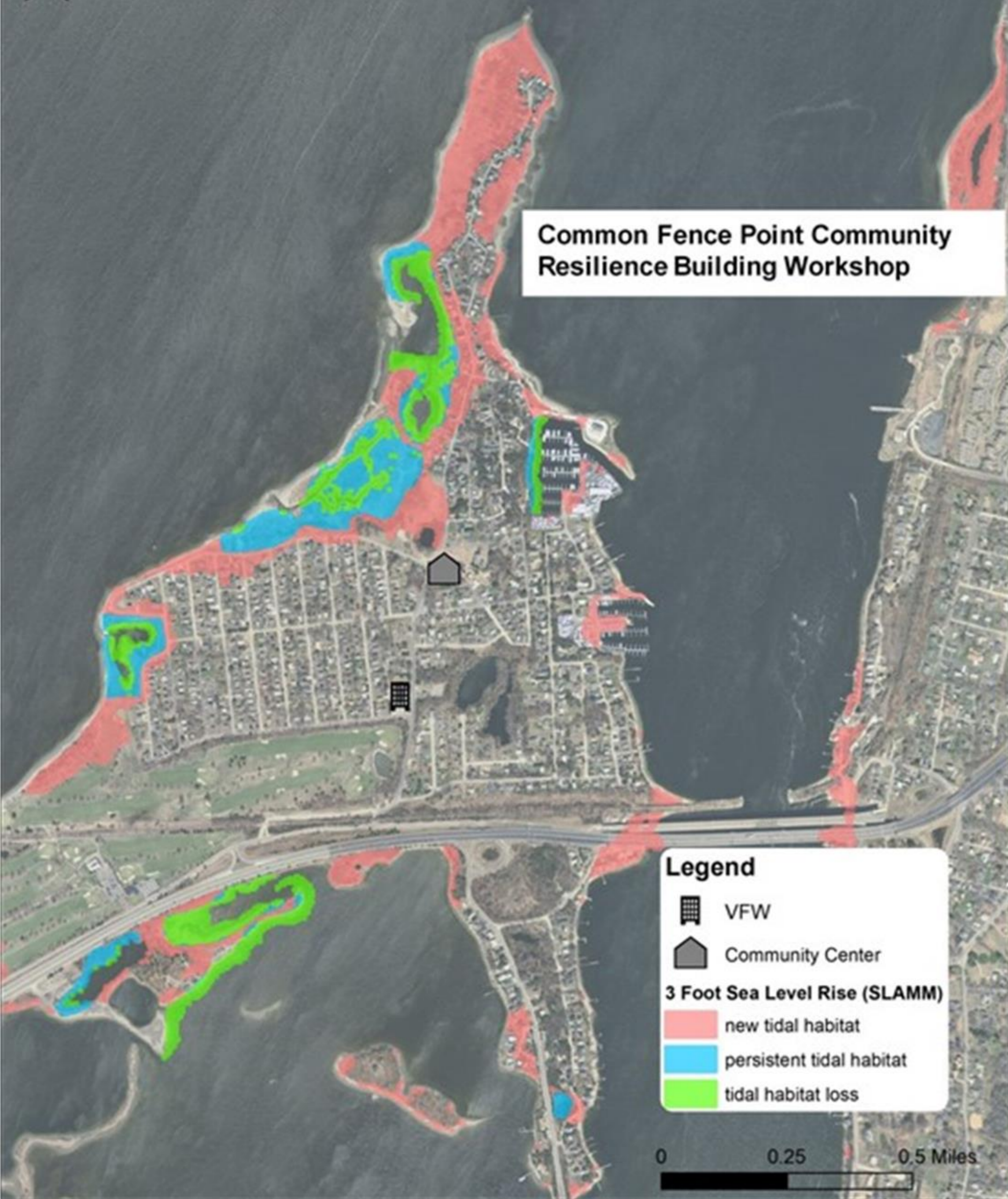
Common Fence Point Community Resilience Building Workshop



Data obtained from RIGIS and the Town of Portsmouth.

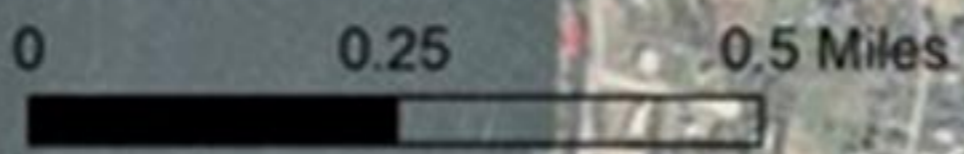


Common Fence Point Community Resilience Building Workshop



Legend

- VFW
- Community Center
- 3 Foot Sea Level Rise (SLAMM)**
 - new tidal habitat
 - persistent tidal habitat
 - tidal habitat loss

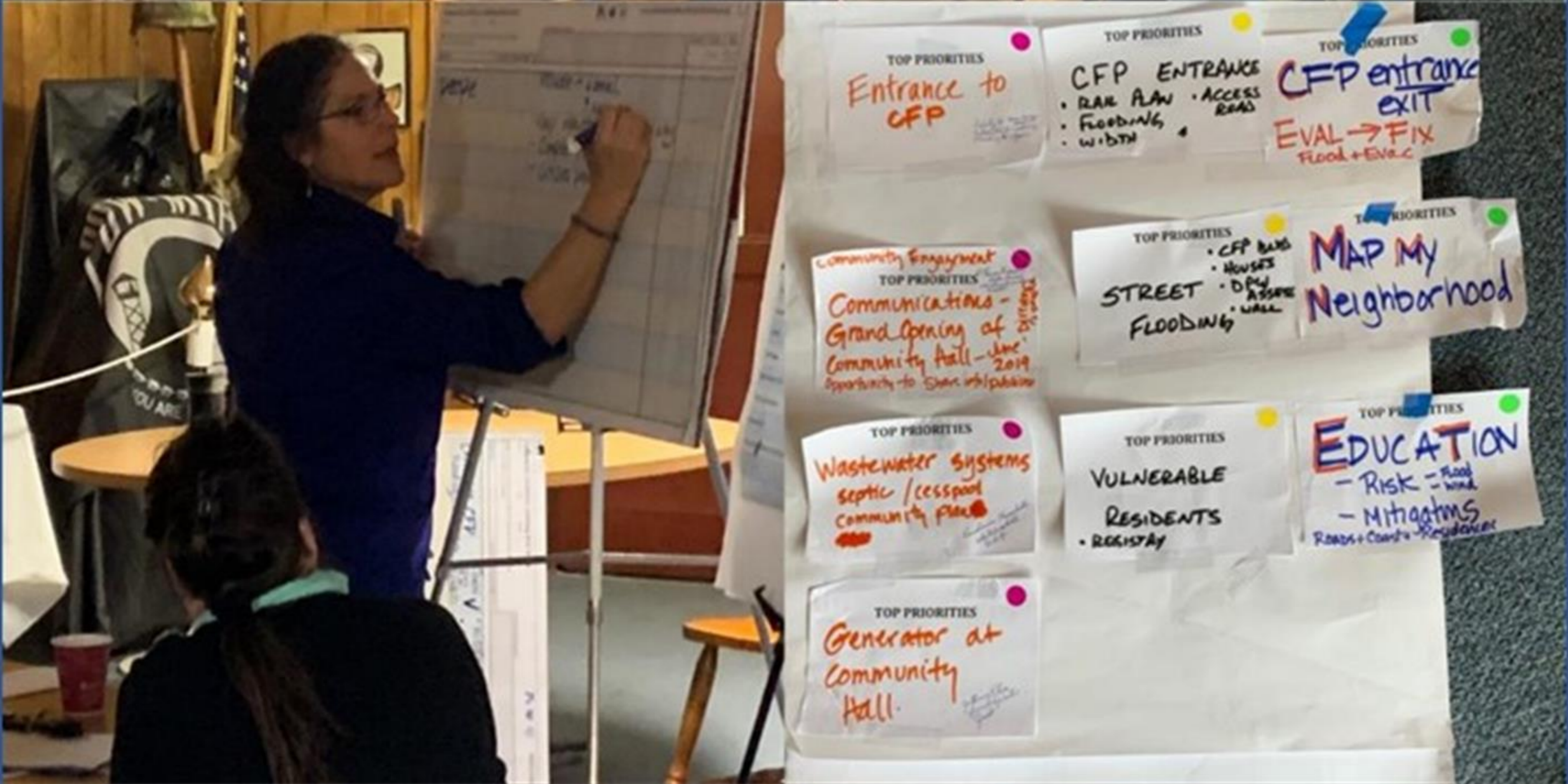


Community Concerns

Legend

- 🏠 VFW
- 🏢 Community Center
- 📍 Seaconnet Sportman Club
- 📍 The Rock
- 🌊 FloodingAreasCombined
- 🏠 Properties
- 🌿 Phragmites
- 📏 Right of ways
- 🟡 CFPIA Land
- 🚤 Marinas







Common Fence Point, Portsmouth, Rhode Island

From meetings held in April 2019

TOP PRIORITY HAZARDS

H-M-L priority for action over the Short or Long term (& Ongoing)
 V = Vulnerability S = Strength

Features

| | | | |
|-----------------------------------|--------------------------------------|---------------------------------|---------------|
| Coastal Flooding from Storm Surge | Coastal Flooding from Sea Level Rise | Flooding from Heavy Rain Events | Wind/ Erosion |
|-----------------------------------|--------------------------------------|---------------------------------|---------------|

Top priorities:
 1. CFP entrance
 2. Mapping the neighborhood
 3. Road flooding; education; septic; grants; generator at Community Hall

| Priority | Time |
|----------|--------------------|
| H-M-L | Short Long Ongoing |

| Environmental Assets | Location | Ownership | V or S | Details About this Feature | Actions | Priority | Time |
|---------------------------|---|----------------------|--------|---|---|------------|---------|
| Bedrock Ledge | Summit area | Private | V | Concerns re. drainage (septic, etc.) downslope. | | | |
| Shoreline | Common Fence Blvd/ Mount View | Town/CFPIA?/ Private | S/V | Strengths: Many. Vulnerabilities: Foot traffic has eroded the minimal amount of marsh left. Rocks were brought in to one area to combat erosion from the forces of the Bay. Wind and flooding (from Nor'easters, for example) threaten Common Fence Blvd., near Mount View, etc. Natural collection point for debris/pollution from towns north of Mt. Hope Bay. | - Evaluate protection needs. - Conduct a cost-benefit analysis. - Update Comprehensive Plan and/or Hazard Mitigation Plan - Explore potential to move homes or for residents to relocate pre and post events (i.e., land swaps) - Conduct a feasibility study (garden drainage, ditches, reduce filling of vulnerable areas, parking enforcement on vulnerable shoreline areas, etc.) | High | Short |
| Phragmites/Invasive Reeds | Mainly the pond at the playground; also some at larger pond at the end of | n/a | V | Vulnerabilities: Chokes out native vegetation. Very difficult and expensive to get rid of (residents didn't want goats). Has successfully been treated on one property. | - Identify what CFP is allowed to do. - Educate residents on pros and cons of Phragmites. - Eradicate/restore in certain areas. | Medium/Low | Ongoing |

CFP Preparedness Committee (CFPPC)



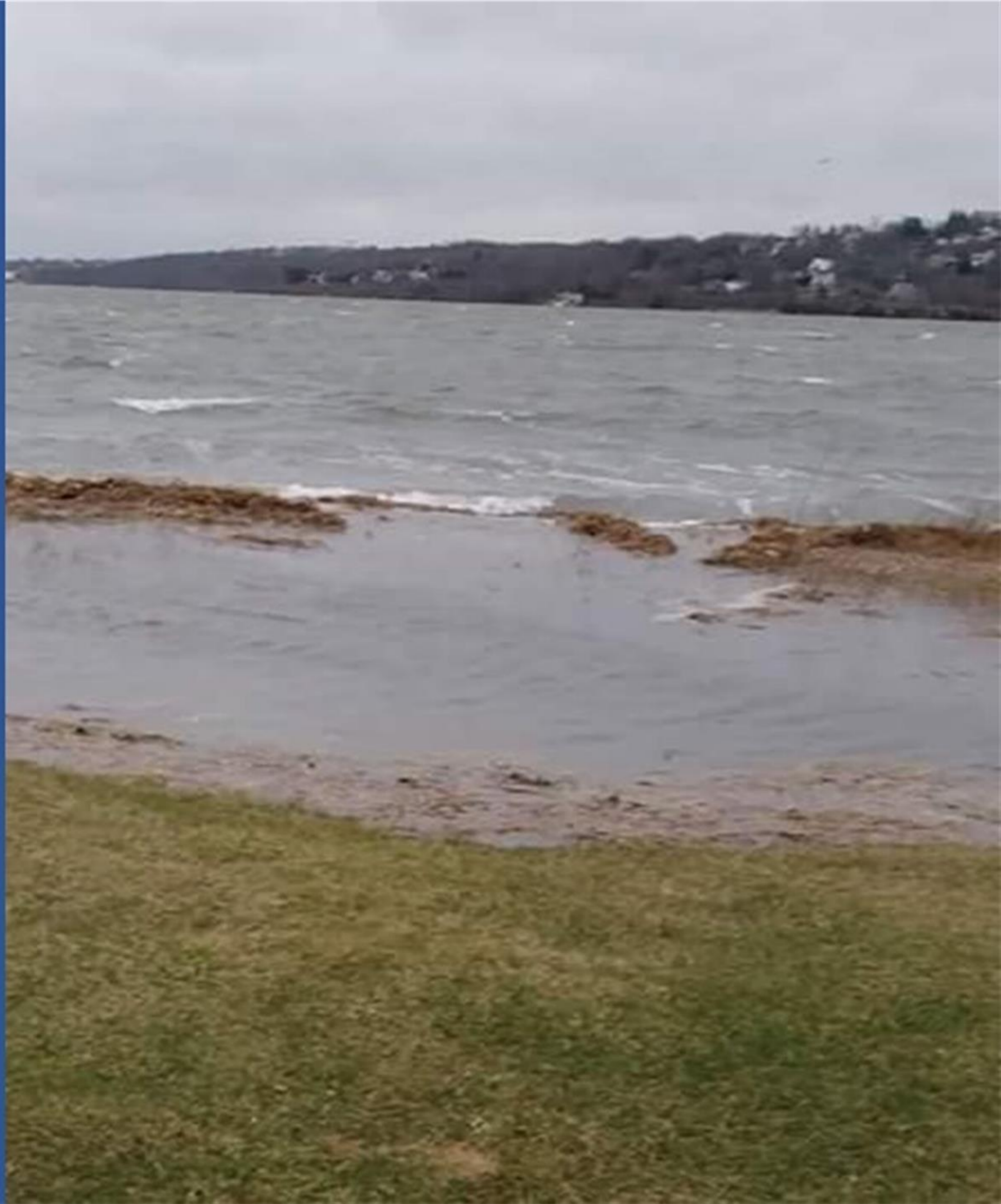
CFPPC Vision:

CFP is prepared for and resilient to the impacts of disasters and long-term climate change.



CFPPC Key Themes

- **connect** CFP community members and respond to their needs
- **share** pertinent information and resources
- **promote** activities
- **coordinate** with the Town, State, and other stakeholders





**Access Alerts
and Warnings**



**Test
Communication
Plans**



**Assemble
or Update
Supplies**



**Drill or Practice
Emergency
Response**



**Plan with
Neighbors**

**10 WAYS TO
PARTICIPATE
IN AMERICA'S
*PrepareAthon!***



**Participate in
a Class, Training,
or Discussion**



**Conduct an
Exercise**



**Make Property
Safer**



**Document and
Insure Property**



**Safeguard
Documents**

11/05/2017 | 9:17 am

(0 hours 41 minutes after high tide)



Weather Overview



Wind Speed: 5.8 MPH
Wind Direction: 106°
Temperature: 54°F
Rainfall (Calendar Day): 0.08"
Rainfall (Past 24 Hours): 0"

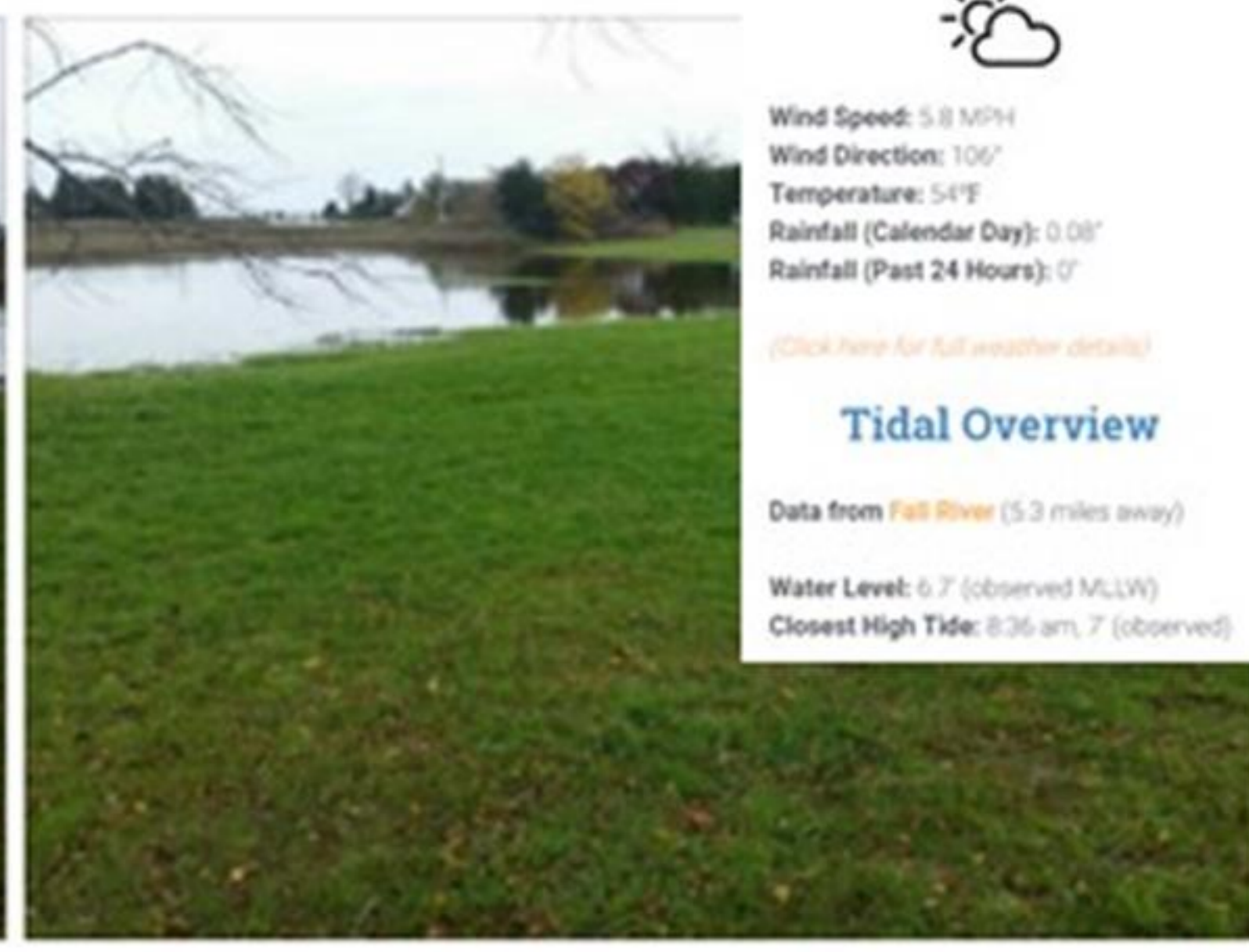
[Click here for full weather details](#)

Tidal Overview

Data from **Fall River** (5.3 miles away)

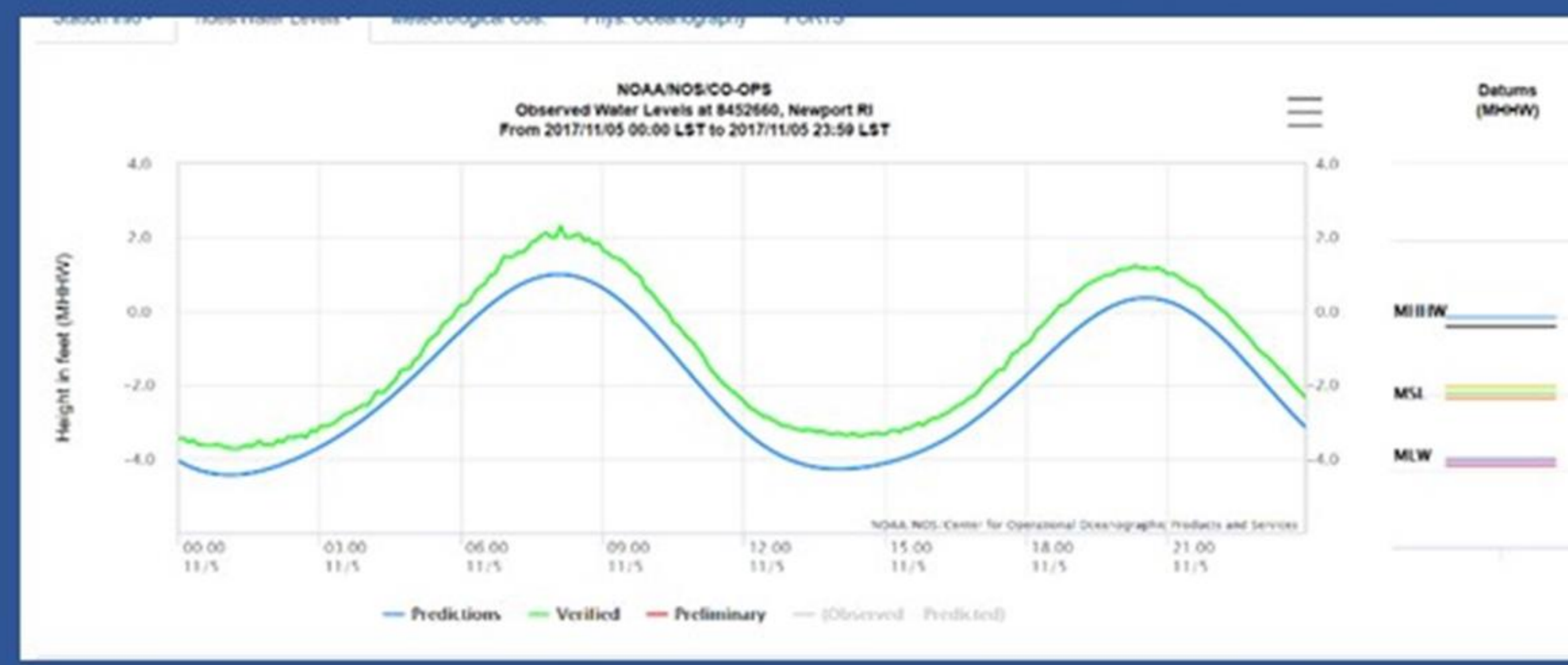
Water Level: 6.7 (observed MLLW)
Closest High Tide: 8:36 am, 7 (observed)

King Tide Report by **Rose Marie Escobar**



2' above Mean
Higher High
Water (MHHW)

Take/share photos of
floods and storm damage.
View on MyCoast.org



Common Climate Problems Concern Portsmouth Neighborhood

February 24, 2020



Climate-change impacts threaten Portsmouth's waterfront Common Fence Point neighborhood. (Frank Carini/ecoRI News)

To be continued...