



BOEM

Bureau of Ocean Energy Management

Overview of Federal Activities in the Northeast Region

Darryl François

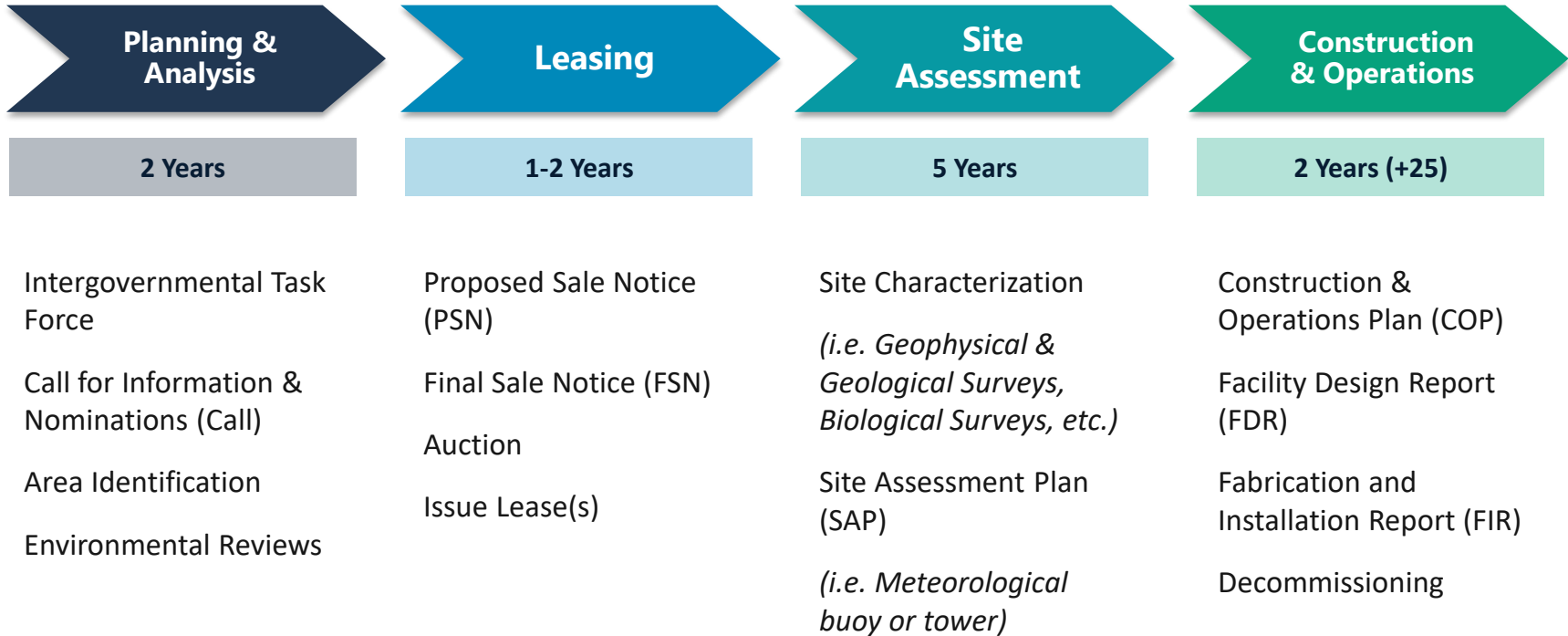
Chief, Engineering and Technical Review

BOEM, Office of Renewable Energy Programs

NROC Meeting

Portsmouth, NH | April 2, 2019

OCS Renewable Energy Authorization Process



Offshore Wind Development in the Northeast

Planning activities

- New York Bight – identify wind energy areas
- Respond to New Hampshire request for intergovernmental renewable energy task force

Leasing

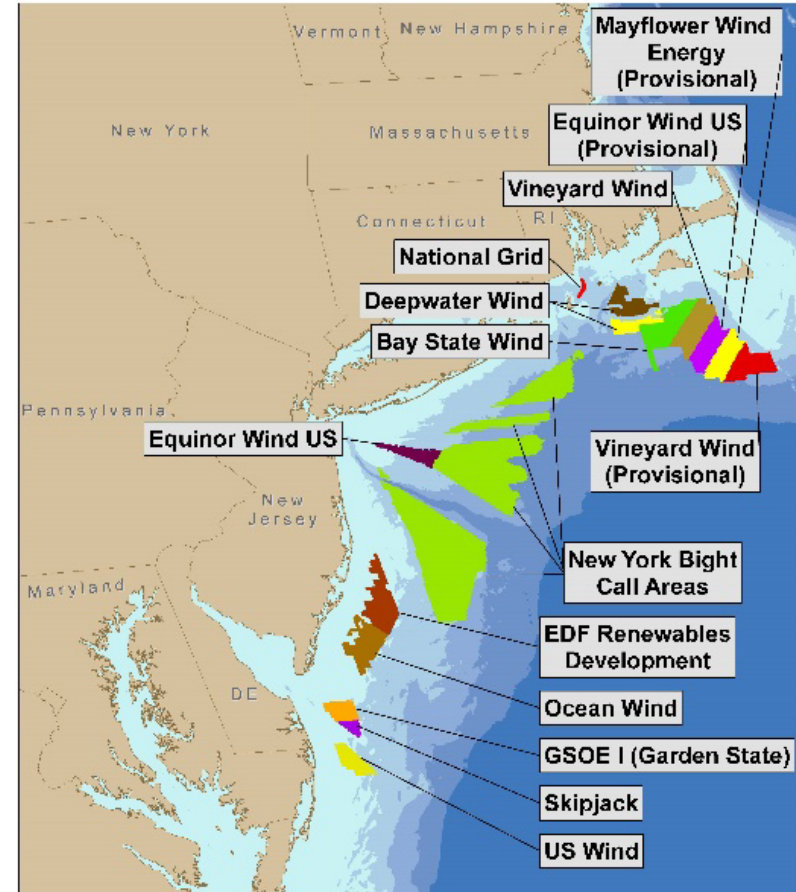
- **8 commercial wind energy leases** on the Northeast OCS

Site Assessment Plans (SAP)

- **4** – (wind & wave and current measurement devices)

Construction and Operations Plans (COP)

- **3 processing**
 - ✓ Vineyard Wind (submitted December 2017)
 - ✓ South Fork (submitted June 2018)
 - ✓ Bay State Wind (submitted March 2019)
- Ongoing survey activity and COPs **expected** over the next 12 months



Recent Stakeholder Collaboration

- ❑ New York Bight Transit Lane Workshop (March 27, 2019): hosted by NYSERDA, NY Dept. of Environmental Conservation, and the Responsible Offshore Development Alliance (RODA)
- ❑ Memorandum of Understanding: RODA, NOAA, and BOEM to work collaboratively on communication, and identify research and monitoring needs related to offshore wind development and fisheries
- ❑ U.S. Coast Guard Port Access Route Study: Focused on fishing vessel traffic through the Rhode Island and Massachusetts lease areas
- ❑ BOEM environmental studies focused on the Northeast:
 - ✓ Offshore Wind Impacts on Tourism: *What did we learn from Block Island Wind Farm?*
 - ✓ Real-time Opportunity for Development Environmental Observations (RODEO) using the Block Island Wind Farm
 - ✓ Whitepaper on Navigation Issues Related to Offshore Wind



For More Information:

Bureau of Ocean Energy Management

www.boem.gov

Renewable Energy Program

www.boem.gov/Renewable-Energy

Regulatory Information

www.boem.gov/Regulatory-Development-Policy-and-Guidelines

Environmental Studies Public Information System (ESPIS)

<https://marinecadastre.gov/espis/#/>



darryl.francois@boem.gov

703-787-1305

