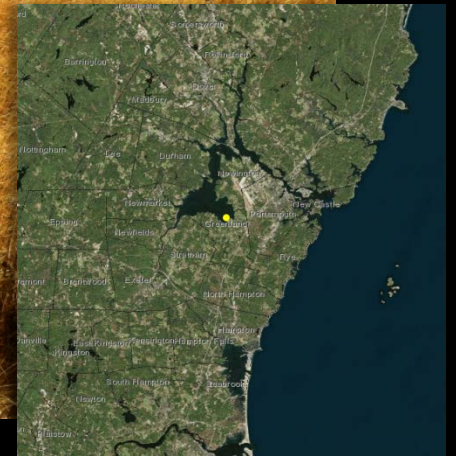
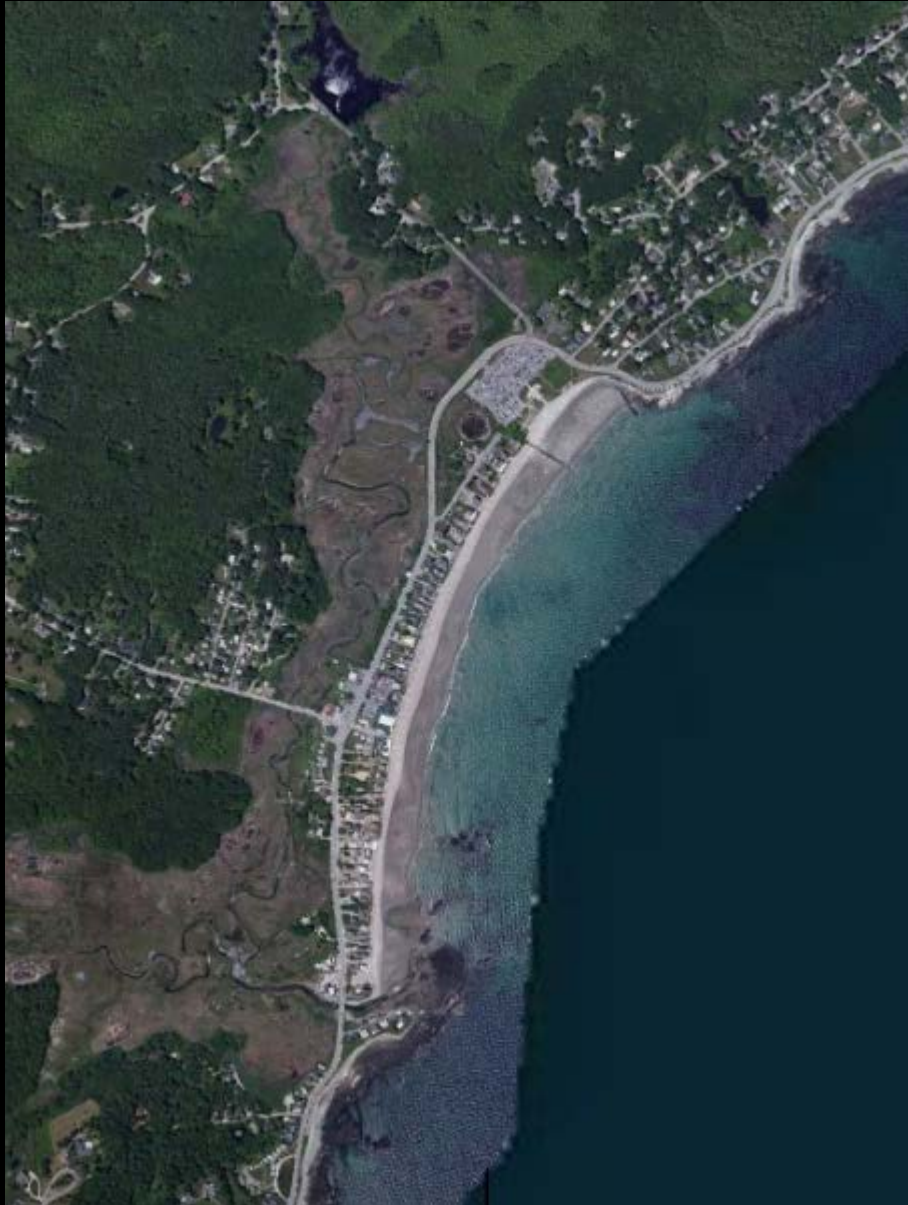


Abundant natural living shoreline in NH, especially in the Great Bay estuary

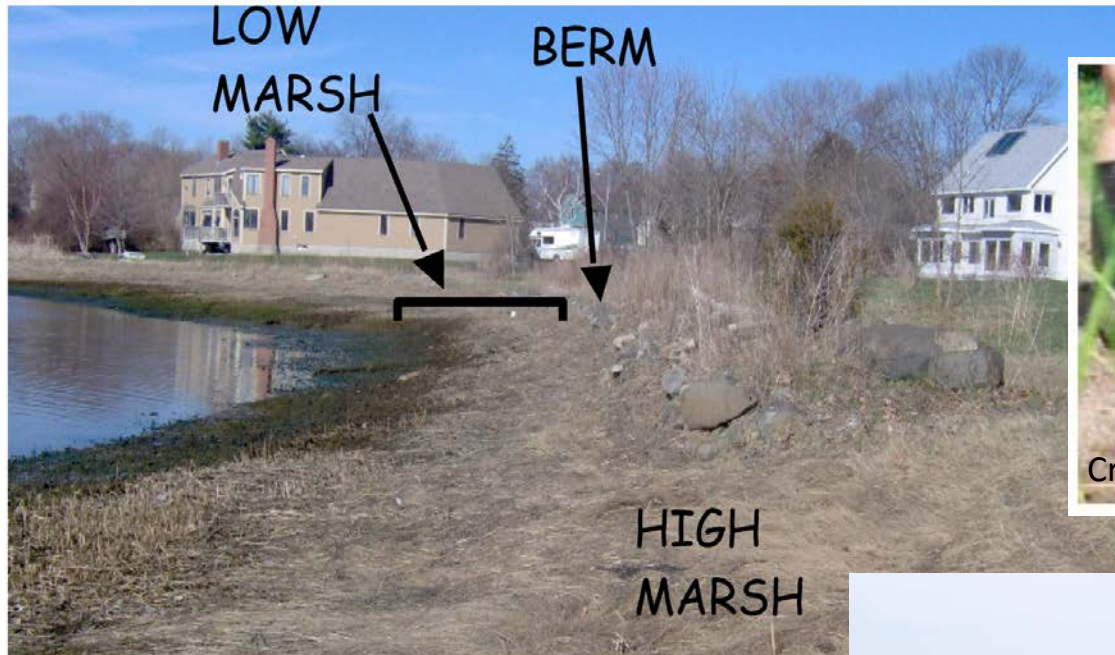




Significant built shoreline, especially along the Atlantic Coast and Piscataqua River

Some limited projects:

Restoration of Mill Pond Way Shoreline in Portsmouth, NH



Credit: Stephanie Parshall, Portsmouth Herald.



Some preliminary “living shoreline” projects are in motion.



**Hampton Beach State Park
dune restoration
(Partners: UNH, NHCP, DRED, NOAA)**

Some preliminary “living shoreline” projects are in motion.



Pre-proposal site design for NH DES Aquatic Resource Mitigation Fund in Portsmouth
Partners: UNH Jackson Estuarine Lab, NHDOT

We have some shoreline inventory data, but we lack an understanding of how much natural & built shoreline we have, its vulnerability, suitable sites for living shorelines, and how approaches could be used here. So:

- NH Coastal Program is conducting a shoreline inventory, vulnerability assessment, and living shoreline site suitability assessment possibly leading toward a Comprehensive Shoreline Management Plan.
- NH Coastal Program is putting together a white paper on regulatory/permitting issues/opportunities.
- GBNERR is organizing Shoreline Management workshops (first one attended by 100+ people in December 2014).
- NH Coastal Adaptation Workgroup is writing a Shoreline Story Series.
- UNH & partners are exploring additional options for sites and monitoring emerging projects.
- To accomplish this, we need guidance & lessons learned from other states!